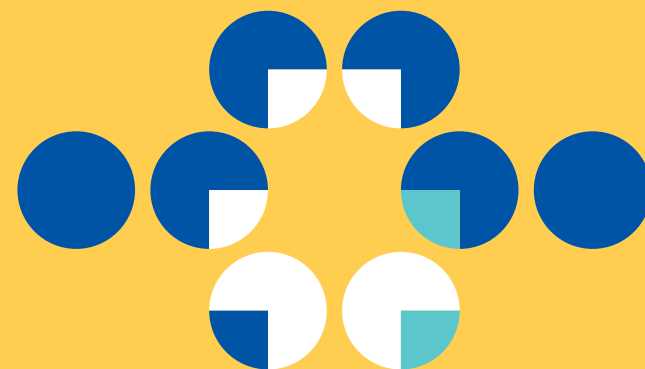


# About Whitefield Industrials Limited



## DELIVERING VALUE TO SHAREHOLDERS SINCE 1923

Whitefield Industrials Ltd is an ASX listed investment company holding a diversified portfolio of ASX listed Industrial (non-resource) shares.

An investment in WHF provides an investor with a stream of franked dividends as well as the potential to benefit from growth in the underlying value of the investment portfolio over time.

The company commenced operations in 1923 and was admitted to the Sydney Stock Exchange in 1928. It is Australia's first listed investment company.

## OUR PROCESS

At the heart of our process lies the research and development undertaken over many years by our investment team in determining the systematic sources of mispricing in investment markets that align best with our investor objectives and the most reliable quantitative methods to identify this in stocks.

## KEY FEATURES:

- A balance of income and growth
- An efficient and diverse exposure to the Australian economy, excluding resources
- Approximately 60% lower carbon emissions than the ASX200.

## OUR STRATEGY

At Whitefield we seek to access, assess and compare information across a wide range of stocks through our quantitative investment framework.

Our assessment process identifies stocks which we consider are likely to be most successful over our investment time-horizon based on our quantitative financial analysis of earnings, quality and value.

Our structured index-enhanced approach to portfolio construction allows us to emphasise or de-emphasise stocks to provide our investors with a highly diversified portfolio that offers the potential to deliver returns in line with our key objectives without exposing investors to undue risk.

## Whitefield Industrials Ltd Fact Sheet

RETURN OBJECTIVE	Reliable stream of franked income; and Portfolio return 0-100 basis points above the Benchmark over rolling 5 year periods
RISK OBJECTIVE	A low degree of variation against benchmark (Target 0.7% - 1.0% Tracking Error)
ASSET ALLOCATION	Long-only, fully invested other than cash held for corporate and short term investment purposes
BENCHMARK	S&P/ASX200 Industrials Accumulation (XJIAI)
INVESTMENT STYLE	Style agnostic, enhanced index
DIVIDEND POLICY	Aim to pay ordinary dividends approximately equal to underlying earnings and average long term realised gains
TAX STATUS	LIC Capital Gains Discount status applicable on a majority of the portfolio
MANAGER	Whitefield Capital Management Pty Ltd
MANAGEMENT FEE	0.26% per annum
OTHER OPERATING EXPENSES	Approximately 0.15% per annum (based on FY25)